

---

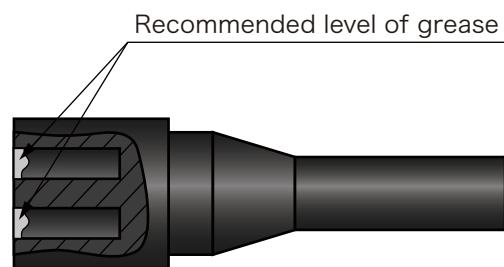
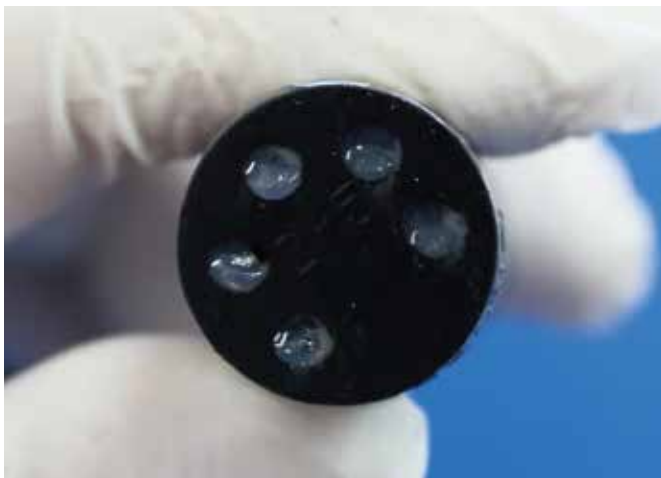
## Precautions for Handling SubConn Underwater Connectors

---

### ● Handling instructions

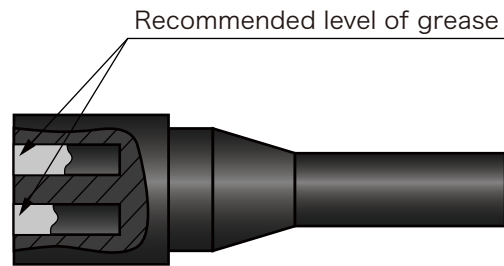
- Be sure to grease the connector before connecting it.
- When disconnecting the connector, pull it straight out without bending it.
- Do not bend sharply or pull hard when connecting or disconnecting the cable.
- When using bulkhead connectors, do not apply a load in the perpendicular direction.
- When tightening the bulkhead nut, be sure to apply the recommended torque.
- Do not expose the connector to heat or direct sunlight for a long time.
- If it should dry out, soak it in fresh water before use.

### ● Greasing procedure for land-based connection



- Before connecting, be sure to apply grease (MOLYKOTE 44 Medium) to the connector.
- To the female connector, apply grease to at least 1/10 of the depth of the socket.
- Grease adequately enough to make sure that the inside of all sockets is fully covered with grease and that there is a transparent layer of grease on the connector surface.
- After applying the grease, check to see if the pins and sockets are optimally greased before connecting the male and female connectors.
- To ensure that the grease is adequately applied, disconnect the connection and check that all the male pins are greased. Then reconnect the connector.

## ● Greasing procedure for underwater connection



- Before connecting, be sure to apply grease (MOLYKOTE 44 Medium) to the connector.
- To the female connector, apply grease to about 1/3 of the depth of the socket.
- Grease adequately enough to make sure that all sockets are completely sealed and that there is a transparent layer of grease on the connector surface.
- After applying the grease, remove the grease from areas other than the connector connection area and connect the male and female connectors.

## ● Cleaning

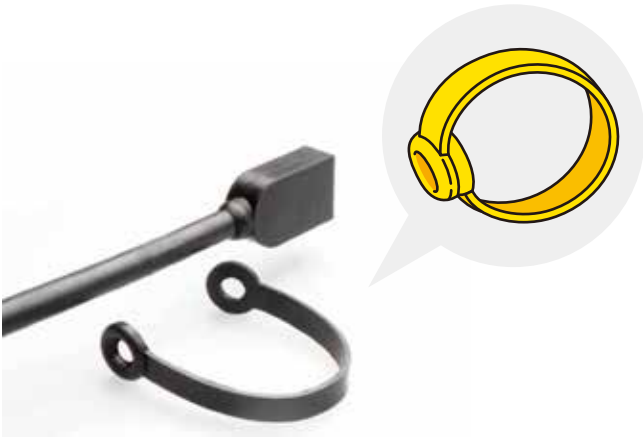
- When generally cleaning or removing sand and mud adhering to the connector, use a contact cleaning agent (isopropyl alcohol) spray.
- When connecting, apply fresh grease again.

## ● Use of Loctite

- Use “Loctite 5910” to fix non-metallic (resin) connectors.
- “Loctite 243” is recommended for metal connectors.

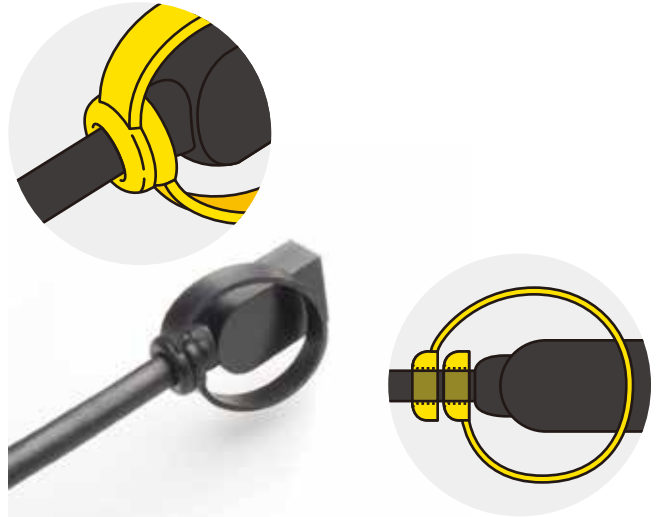
● Instructions for using Low Profile fixing straps

Step (1)



Prepare a pigtail connector and a strap.

Step (2)



Pass two loops of the strap from the end of the pigtail connector.

Step (3)



Step (4)



After the connector is engaged, pull the strap to hook it.

\*Indicate if you require a strap when ordering.