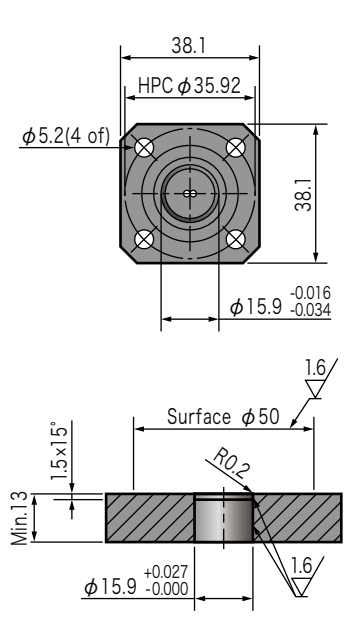


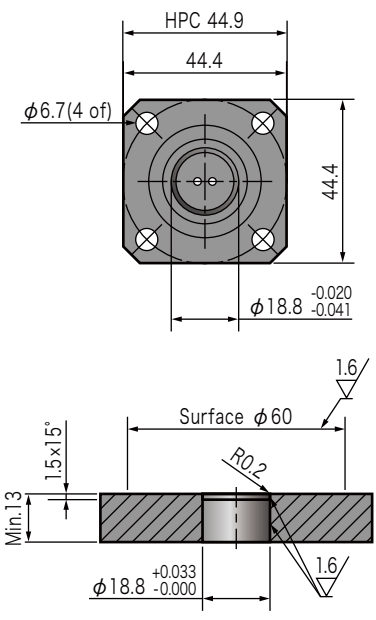
SubConn Bulkhead Connectors Technical Information

● Mounting Hole Dimensions for Metal Shells

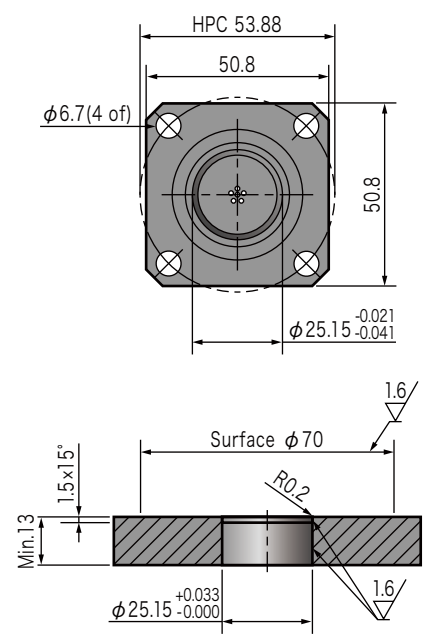
FCR 1500 Series



FCR 2000 Series

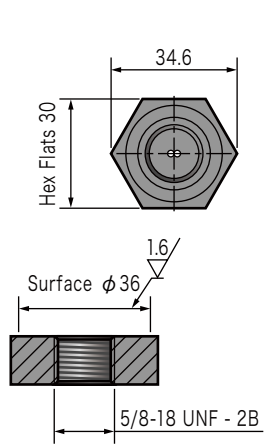


FCR 2400 Series

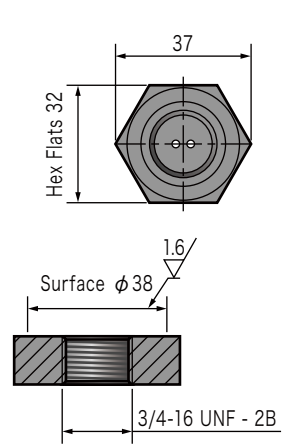


HPC = P.C.D

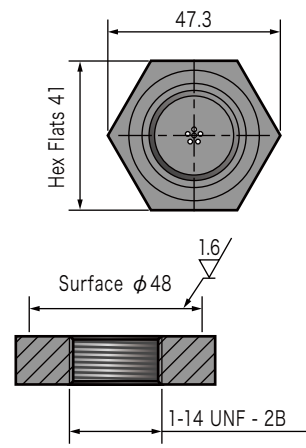
BCR 1500 Series



BCR 2000 Series



BCR 2400 Series



● Recommended Tightening Torque

Screw Size	Material	Recommended Torque (N·m)
3/8" - 24 UNF	Brass	4.0
	Aluminum	
	Stainless Steel	6.0
	Titanium	
	Resin	2.0
7/16" - 20 UNF	Brass	10.0
	Aluminum	
	Stainless Steel	14.0
	Titanium	
	Resin	4.2
1/2" - 20 UNF	Brass	15.0
	Aluminum	
	Stainless Steel	21.0
	Titanium	
	Resin	5.2
5/8" - 18 UNF	Brass	29.0
	Aluminum	
	Stainless Steel	41.0
	Titanium	
	Resin	10.0

3/4" - 16 UNF	Brass	44.0
	Aluminum	
	Stainless Steel	63.0
	Titanium	
	Resin	15.0
7/8" - 14 UNF	Brass	60.0
	Aluminum	
	Stainless Steel	80.0
	Titanium	
	Resin	20.0

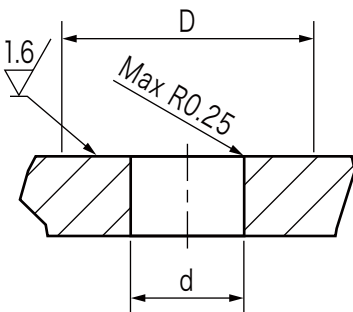
● Connector Body Material

Material	
Brass	UNS-C36000
Aluminum	6061, Anodized Finish
Stainless Steel	AISI 316
Titanium	Grades 5(GR5)
Resin	PEEK 30

● AWG Conversion Table

AWG	mm ²	AWG	mm ²	AWG	mm ²	AWG	mm ²
2/0	67.40	6	13.29	13	2.63	20	0.52
1/0	53.46	7	10.55	14	2.08	21	0.41
1	42.39	8	8.36	15	1.65	22	0.33
2	33.61	9	6.63	16	1.31	23	0.26
3	26.65	10	5.26	17	1.04	24	0.20
4	24.14	11	4.17	18	0.82	25	0.16
5	16.76	12	3.31	19	0.65	26	0.13

● Recommended Mounting Hole Diameter



Screw Size	Hole Diameter (D)	Tolerance Range	O-Ring Contact Surface Diameter (D)
3/8" - 24 UNF	φ9.5mm	±0.1	φ 25.0mm
7/16" - 20 UNF	φ11.3mm	±0.1	φ 25.0mm
1/2" - 20 UNF	φ12.8mm	±0.1	φ 25.0mm
5/8" - 18 UNF	φ16.0mm	±0.1	φ 30.0mm
3/4" - 16 UNF	φ20.5mm	±0.1	φ 40.0mm
7/8" - 14 UNF	φ22.5mm	±0.1	φ 40.0mm